



## **Stellar Phoenix Word Recovery**

Version 2.0

### *Installation Guide*

## Contents

Overview .....	3
Minimum System Requirements .....	4
Installation Procedure.....	5
Uninstalling the Software.....	9
Order and Activate the Software.....	10
Using the Software .....	12
Technical Support .....	15
About Stellar.....	16

## Overview

**Stellar Phoenix Word Recovery**, a simple and secure software designed for repairing corrupt Microsoft Word (.DOC) files. The file repair software does a complete scan of all selected Word documents and uses an advanced algorithm to restore damaged Word files back to their original state. The recovered files can either be saved to their original location on the hard disk, or to any user-specified location.

### Features of Stellar Phoenix Word Recovery v2.0

- Recovers **text and preserves formatting** of original document.
- Recovers **tables, bulleted lists, embedded images**, and so on.
- Restores **header and footer**.
- **Preview of files** available in demo version and full version.
- **Live update** feature to constantly update the software with latest updates.
- Supports **RTF** (rich text format).
- Recover all fields, including **hyperlinks**.
- Interactive user interface.
- Simple to operate, requires no prior technical skills.
- Supports Word 2003, XP(2002), and 2000.
- Compatible with Windows NT/ 2000/ XP/ 2003/ Vista.

**Note:**

Stellar Phoenix Word Recovery will give preview of all recoverable files in both versions i.e. Demo version and Full version. However, to repair and restore these files you need to purchase and activate the product.

## Minimum System Specification



**Processor** : Pentium Class



**Operating System** : Windows NT / 2000 / XP / 2003 / Vista



**Memory** : 128 MB recommended



**Hard Disk** : 10 MB of free space



**MS Word** : Word 2000 / 2002 (XP) / 2003

### Note:

- To know your Operating System, Processor type, and RAM, right-click *My Computer* and click *Properties*.
- To find out the available space on a logical drive, right click that drive icon in *My Computer* and click *Properties*.

## Installation Procedure

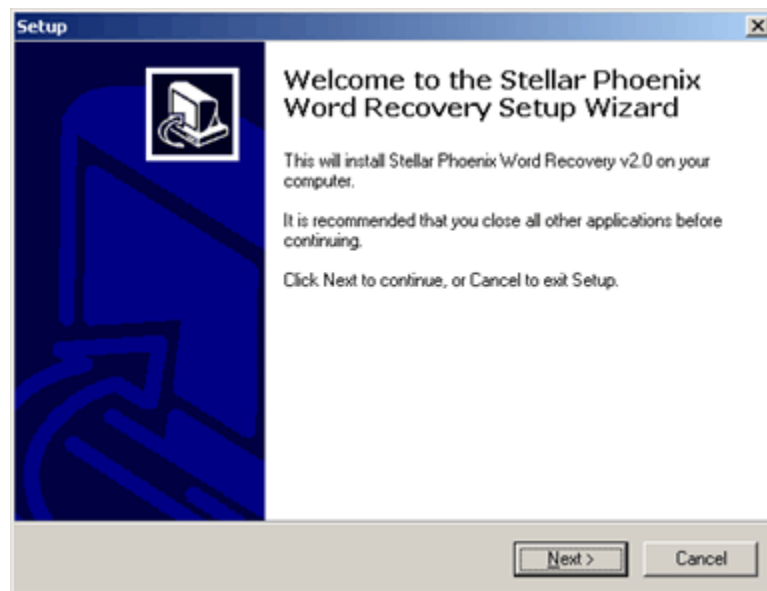
Before beginning installation, make sure that your computer meets minimum system requirements.

- The installation process should start automatically on inserting the disc in its drive. If it does not, run *swr.exe* from the software disc. If the software has been downloaded from the Internet, navigate to the location where the files have been downloaded and run *swr.exe* from there.
- Follow the instructions as directed by the setup program. The program installs the software, creates a shortcut icon on the desktop or on the taskbar (optional), creates an entry in the *Programs* group menu, and creates an entry in the *Add/Remove Programs* group for software removal.

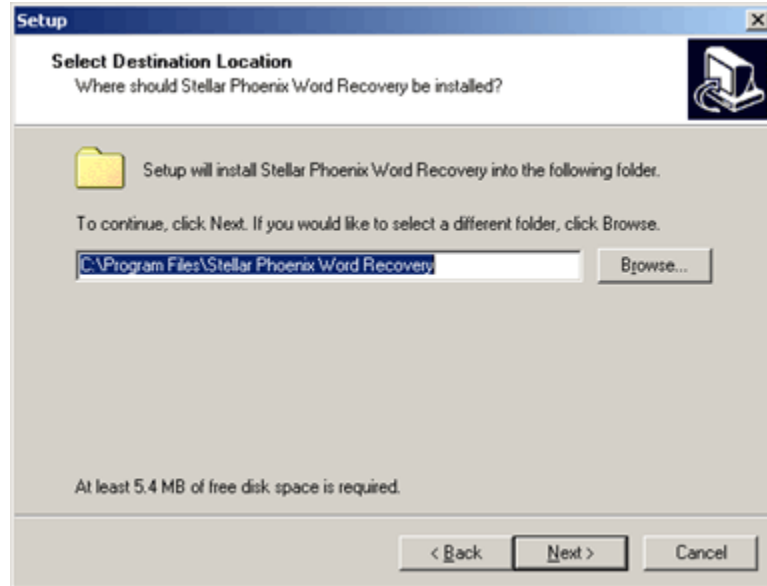
The default path for software installation is *C:\Program Files\Stellar Phoenix Word Recovery\*.

**On-screen instructions directed by the setup program are as follows:**

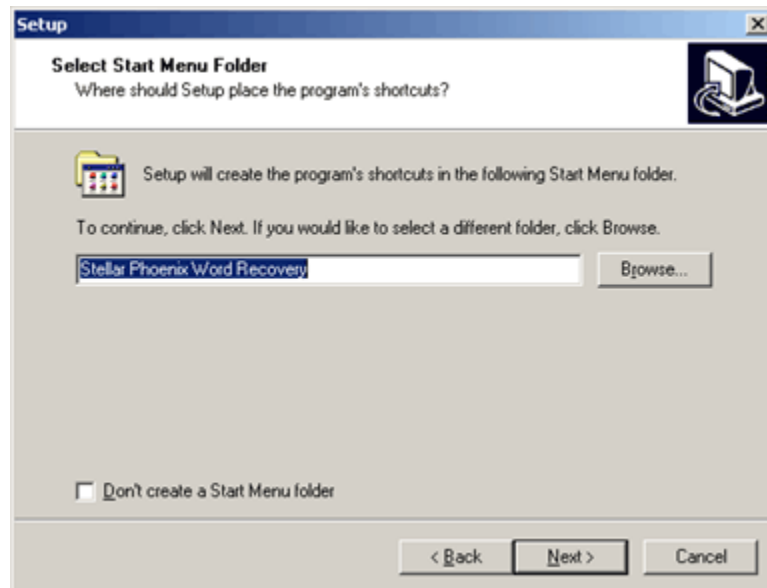
**Step 1:**



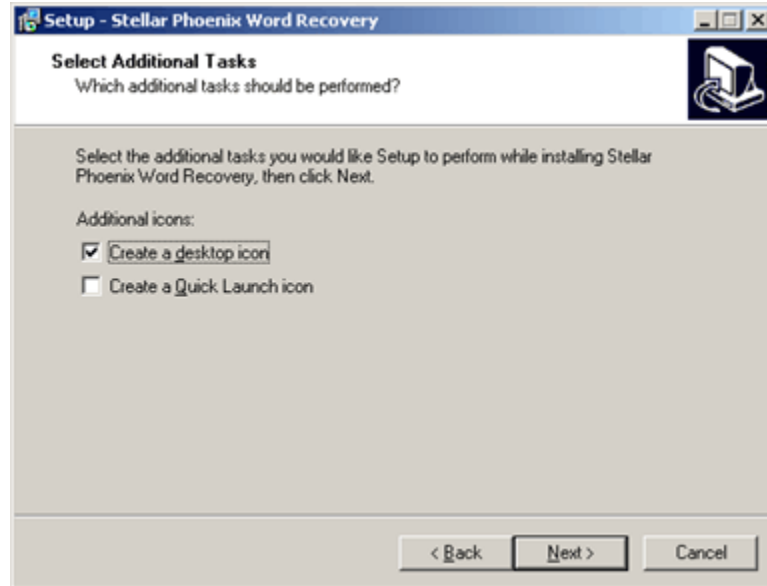
**Step 2:**



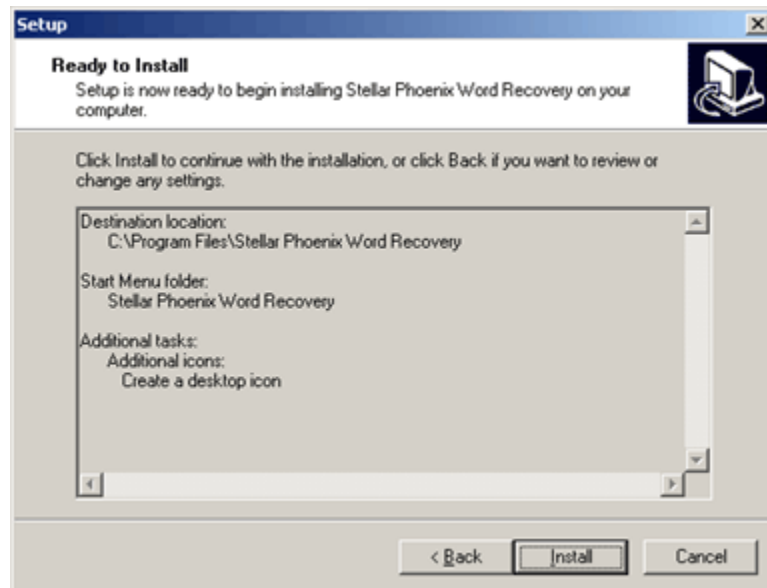
**Step 3:**



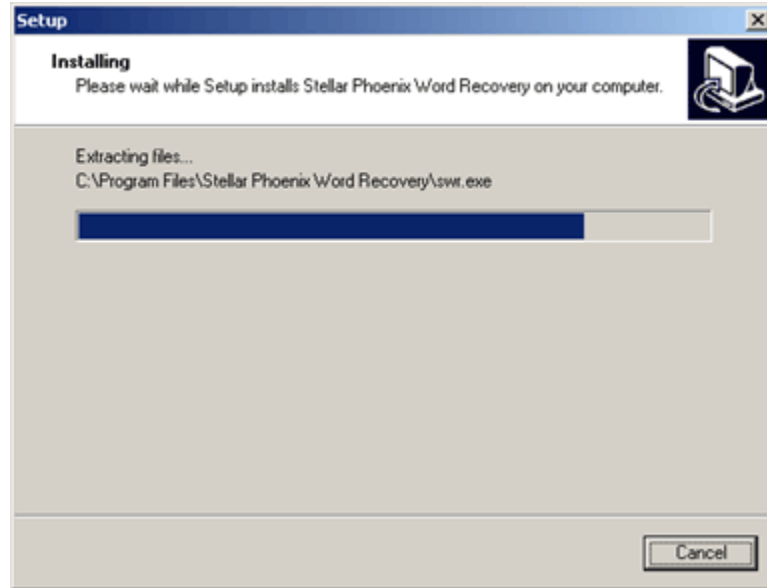
**Step 4:**



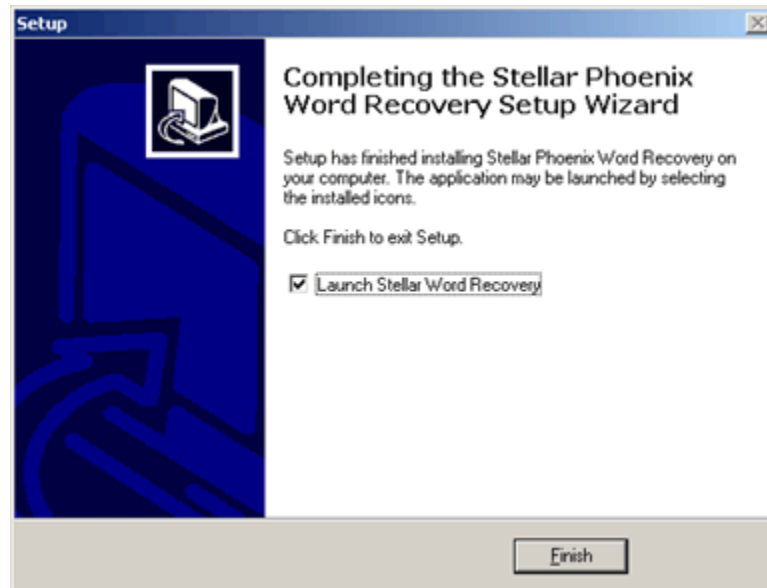
**Step 5:**



**Step 6:**



**Step 7:**



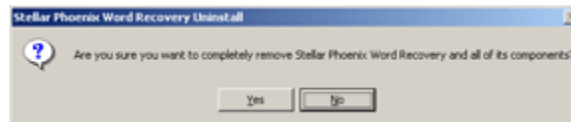
## Uninstalling the software

Stellar Phoenix Word Recovery can be removed either by using **Uninstall Stellar Phoenix Word Recovery** program in the software or from **Add/Remove Programs** in the Control Panel.

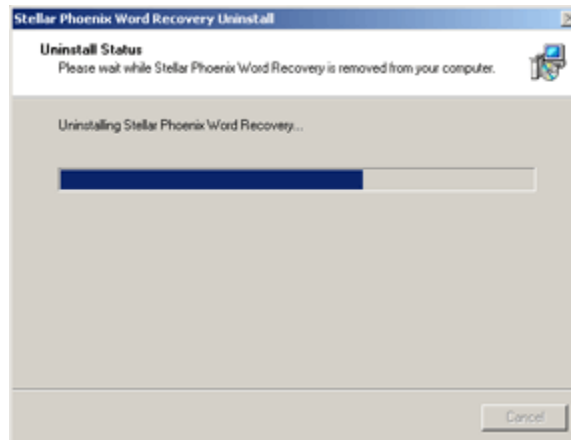
- To run the *Uninstall* program, click *Start -> Programs -> Stellar Phoenix Word Recovery -> Uninstall Stellar Phoenix Word Recovery*. Follow the instructions as directed by the uninstall program. The program will completely remove the software, including registry entries.
- The *Uninstall* program in the software may also be run from the *Add/Remove Programs* list in *Control Panel*. To open Control Panel window click *Control Panel* from the *Start* menu, or double-click the *Control Panel* icon in *My Computer*. In Control Panel, double-click *Add/Remove Programs*. Select the Stellar Phoenix Word Recovery entry from the displayed list and click *Change/Remove*. Follow the instructions as directed by the uninstall program. The program will completely remove the software, including registry entries.

**On-screen instructions directed by the setup program are as follows:**

### Step 1:



### Step 2:



### Step 3:



## Order and Activate the Software

### Order Stellar Phoenix Word Recovery online:

You can purchase the software online. For price details and to place the order, please visit [www.stellarinfo.com/word-recovery-prices.htm](http://www.stellarinfo.com/word-recovery-prices.htm)

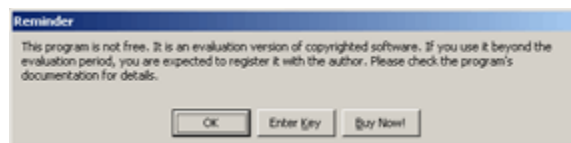
Once your order is confirmed, a pre-paid serial # will be sent to you through e-mail, which would be required to activate the software.

### Activate Stellar Phoenix Word Recovery:

Once the software has been purchased and the **Serial Key** received, the software needs to be activated.

Each time you start the demo version, reminder window pops up. To continue with the demo version, you have to click **OK**. (*Wait for 5 seconds to enable OK button*)

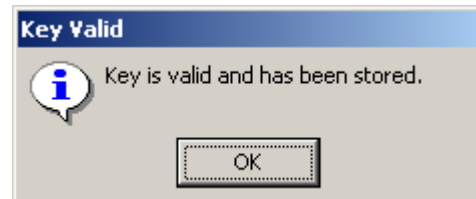
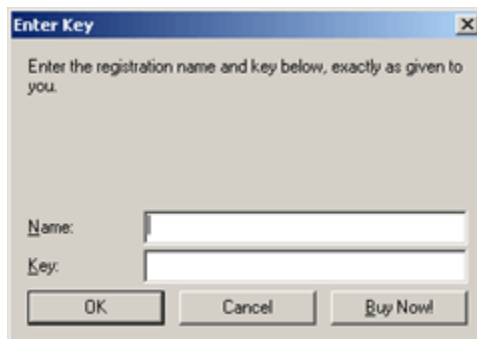
*To purchase full version, click **Buy Now** and to activate the product, click **Enter Key**.*



There are two methods for activating the product:

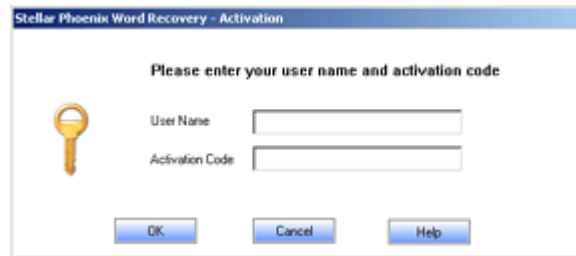
#### Method 1:

- Click **Enter Key** button in the reminder window.
- Type the registration name and key (*received through e-mail after purchase*)
- You get the confirmation message if the key is valid, click OK.



**Method 2:**

- Run demo version.
- Click **Activate Stellar Phoenix Word Recovery** option in the *Help* menu.
- Type the username and activation code, click OK.



Stellar Phoenix Word Recovery - Activation

Please enter your user name and activation code

User Name

Activation Code

OK Cancel Help

## Using the Software

Stellar Phoenix Word Recovery software repairs and restores MS Word (.doc) files corrupted due to virus attack, software malfunctioning or unexpected system shut down. The powerful algorithms used in the software will analyze the damaged files. Eventually, repair and retrieve all the contents back to readable form and successfully restore them to a safe location. It can also recover multiple Word files at a time.

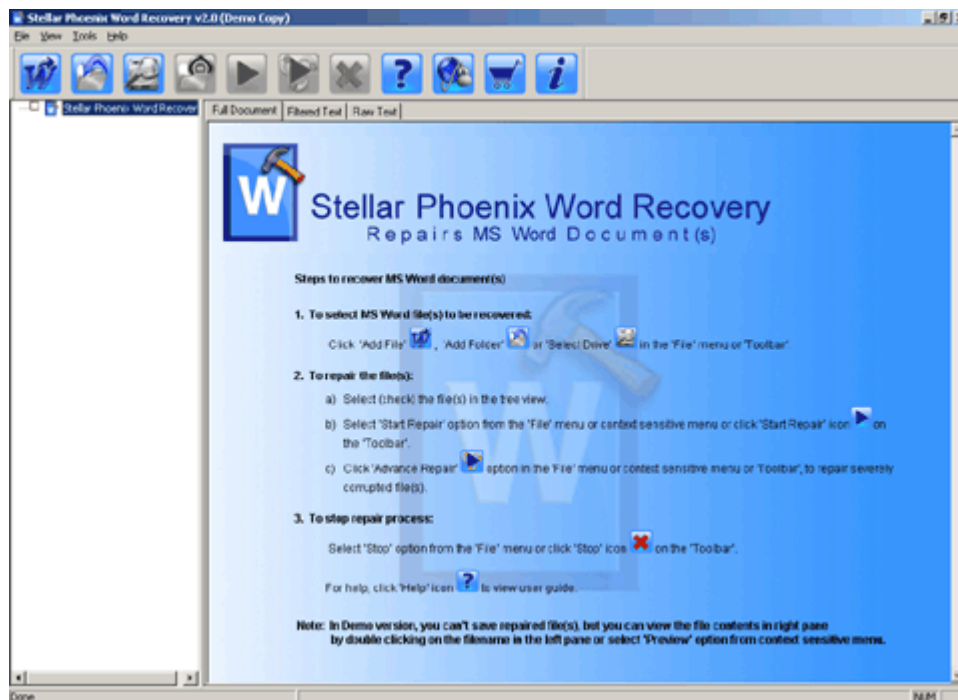
### Steps to repair corrupted Word (.doc) files:

- Select corrupted Word file(s)
- Repair and restore file(s) to a safe location in readable form

You can view the content of the files in three different formats – *Full document*, *Filtered text* and *Raw text*. These file previews are available according to the intensity of the file damage. In case of severely damaged files, the software provide plain text preview of the file content in *Filtered text* and *Raw text* view. If you want to preview a file, double click on the required file in the tree view.

#### Note:

Stellar Phoenix Word Recovery will give preview of all recoverable files in both versions i.e. Demo version and Full version. However, to repair and restore these files you need to purchase and activate the product.



## Select corrupted Word document(s)

### To add individual file(s):

- Click **Add File to Tree View** icon on the toolbar or click *File -> Add File to Tree View* option in the menu bar.
- Navigate to the Word file, select it and click *Open*. This will add the selected file to the tree view.
- Repeat steps 1 and 2 to include as many files as required. All the selected files will appear in tree view.

### To add all files in a folder:

- Click **Add Folder to Tree View** icon on the toolbar or click *File -> Add Folder to Tree View* option in the menu bar.
- Navigate to the folder, select it and click *OK*. This will add all the Word files from the folder to the tree view.
- Repeat steps 1 and 2 to include more files.

### To add all files in a logical drive:

- Click **Select Drive** icon on the toolbar or click *File -> Select Drive* option in the menu bar.
- Choose the drive and click *OK*. This will add all the Word files from the drive to the tree view. Since entire drive is being scanned, it may take some time to complete.

### To start repairing:

- Select the file(s)/folder(s) to be repaired from the tree view i.e. click on the check box next to them. For selecting all files, click the check box next to root folder in the tree view.
- Click **Start Repair** icon on the toolbar or click *File -> Start Repair* option in the menu bar. You can also enable *Repair* option from context sensitive menu (by right click).
- Select the destination and format of the repaired file(s) and click *OK*. By default, repaired file(s) are saved as Word document (.doc format) and to the same path as the original. If you want to save the repaired files to another location, choose *Select New Folder* option and specify the folder. You can also save the repaired files to plain text or raw text format.
- After repairing, all selected files will be recovered and saved to the chosen path. The progress bar at the bottom left of the interface window indicates the completion status. All recovered files are named *Repaired\_n\_Filename*. (*n* -stands for an integer which increments with each repaired files).

**Using Advance Repair:**

Advance Repair option will repair severely corrupted or files with unsupported format. If unable to repair the files using normal repair option, then the software will prompt for Advance Repair. This will repair the files either as Word document or as plain text. You can restore the file to same path as the original file(s) or to any other user-specified folder.

To repair severely corrupted files, click **Advanced Repair** icon or click *File -> Advanced Repair* option in the menu bar. You can also enable *Advance Repair* option from context sensitive menu (by right click).

**Note:**

*Repairing of file is possible only with the registered product. If you are using the demo version, purchase the full version and activate the product.*

**To stop repair process:**

If you wish to halt the repairing process in-between,

- Click **Stop** icon on the toolbar or click *File -> Stop* option in the menu bar.

**To remove file(s)/folder(s) from tree view:**

- Select the file(s)/folder(s) to be removed i.e. click on the check box next to them. For selecting all the files, click the check box next to root folder in the tree view.
- Click **Remove File/Folder** icon on the toolbar or click *File -> Remove from Tree* option in the menu bar.

## Technical Support

Our Technical Support professionals will give solutions for all your queries related to Stellar Products.

You can either **Call Us** or **Go Online** to our support section [www.stellarinfo.com/support](http://www.stellarinfo.com/support)



### Support Helpline

**24 Hrs.** a day **Monday – Friday**

<b>USA</b> (Toll free - Pre Sales Queries)	-	1-866-554-2512
<b>USA</b> (Post Sales Queries)	-	1-315-220-6245
<b>UK</b> (Europe)	-	+44-207-993-2293
<b>Germany</b>	-	+49-180-110-105-0051
<b>Worldwide</b>	-	+91-921-395-5509
<b>Skype Id</b>	-	stellarsupport



### Online Help

Chat Live with an Online technician

Search in our extensive Knowledge Base

Submit Ticket (If our Knowledge Base does not answer your question)

Login and view Ticket Status (If you already have a valid Ticket with you)

Download Documents on Product Usage ( For Registered members only, i.e, user with login ID. If you are an unregistered user, please visit

<http://stellarinfo.com/esupport/users/login.php> to create login ID)

## Welcome to Stellar

**Stellar Information Systems Ltd.** is a trusted name in the field of Data Recovery and Data Protection Software for more than a decade.

We provide the widest range of Data Recovery Products. Our range includes Data Recovery Software for almost all Operating Systems and File Systems.

### Product line:

**Data Recovery** : A widest range of data recovery software that helps you recover your valued data lost after accidental format, virus problems, software malfunction, file/directory deletion, or even sabotage!. [More Info >>](#)

**File Recovery**: The most comprehensive range of file undelete and unerase software for Windows and MS office repair tools. [More Info >>](#)

**Email Recovery**: A wide range of mail recovery, mail repair and mail conversion applications for MS Outlook, MS Outlook Express and MS Exchange useful in instances of data loss due to damages and corruption of Email. [More Info >>](#)

**Data Protection**: A wide range of Prevent Data Loss, Data backup and Hard Drive Monitoring Applications to ensure complete data protection against hard drive crash. [More Info >>](#)

**Data Sanitization**: Data cleanup and file eraser utility can delete selected folders, groups of files, entire logical drives, System Traces & Internet traces. Once the data have been removed using Stellar Wipe - Data File eraser utility, it is beyond recovery limits of any Data Recovery Software or utility. [More Info >>](#)

*For more information about us, please visit [www.stellarinfo.com](http://www.stellarinfo.com)*